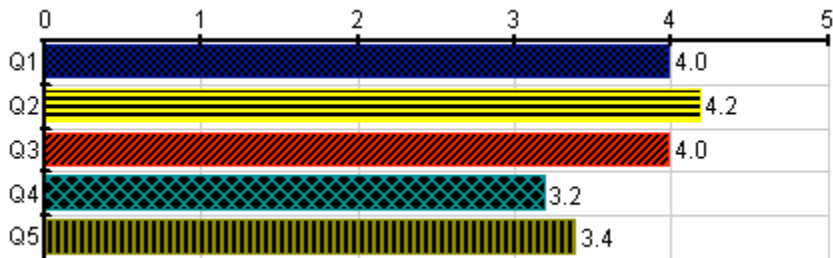


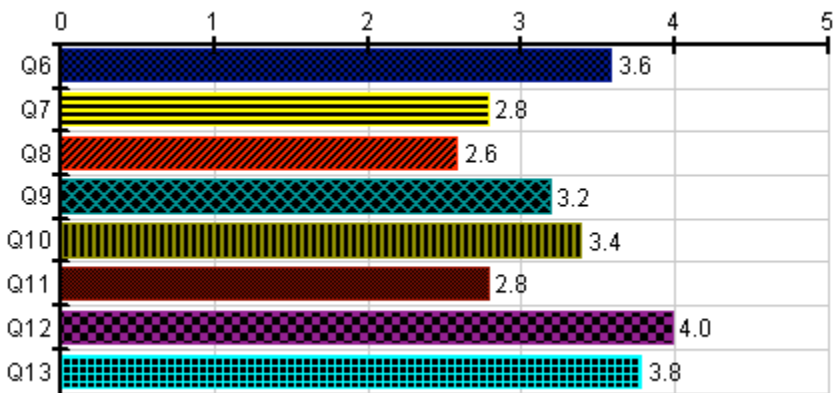
Course:	IT-101 - IT Survey Course	Department:	Info
Instructors:	Heather Ek; Tandy Krenz; Nathan Lind; Matthew Schornstein; Eric Strom	Resp. Rec'vd / Expected:	5 / 7



Survey Results
IT-101

Student Learning		IT-101								
		Responses					Course			
		[R]	[O]	[S]	[F]	[AA]	Med.	S.D.	N	Mean
Q1	I found this course intellectually challenging.	0	0	2	1	2	4	.89	5	4.0
Q2	I was able to apply what I learned to a variety of problems or examples within this course.	0	0	0	4	1	4	.40	5	4.2
Q3	I was able to relate what I learned in this course to experiences and ideas outside the course.	0	0	1	2	1	4	.71	4	4.0
Q4	I believe I learned from the contributions of other students.	0	2	1	1	1	3	1.17	5	3.2
Q5	I believe I contributed to other students' learning.	1	1	0	1	2	4	1.62	5	3.4

Responses: [R] rarely=1 [O] occasionally=2 [S] sometimes=3 [F] frequently=4 [AA] almost always=5

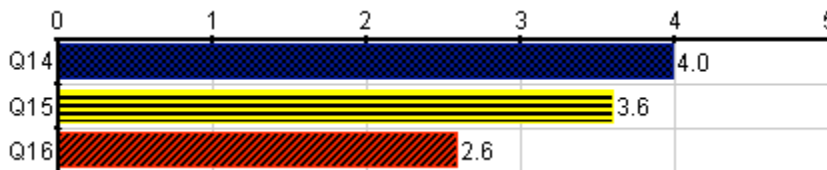


Survey Results
IT-101

Teaching Practice		IT-101								
		Responses					Course			
		[R]	[O]	[S]	[F]	[AA]	Med.	S.D.	N	Mean
Q6	The instructor seemed well prepared for each class.	1	0	0	3	1	4	1.36	5	3.6
Q7	The instructor used class time well.	1	1	2	0	1	3	1.33	5	2.8

Q8	The instructor clearly defined the students' responsibilities in this course.	1	1	2	1	0	3	1.02	5	2.6
Q9	The instructor related theories and concepts to meaningful issues.	0	1	2	2	0	3	.75	5	3.2
Q10	The instructor treated students with respect.	1	0	1	2	1	4	1.36	5	3.4
Q11	The instructor encouraged students to participate in this class.	0	2	2	1	0	3	.75	5	2.8
Q12	The instructor was available to students outside of class (e-mail, office hours, the web as appropriate).	0	0	2	1	2	4	.89	5	4.0
Q13	The instructor communicated high expectations for students in this course.	0	0	2	2	1	4	.75	5	3.8

Responses: [R] rarely=1 [O] occasionally=2 [S] sometimes=3 [F] frequently=4 [AA] almost always=5



Survey Results
IT-101

Course Elements		IT-101								
		Responses					Course			
		[SD]	[D]	[N]	[A]	[SA]	Med.	S.D.	N	Mean
Q14	My grade in this course was based on a variety of assignments / assessments.	0	0	0	5	0	4	.00	5	4.0
Q15	The instructor provided helpful feedback on my work.	0	1	1	2	1	4	1.02	5	3.6
Q16	The instructor provided prompt feedback on my work.	1	1	2	1	0	3	1.02	5	2.6

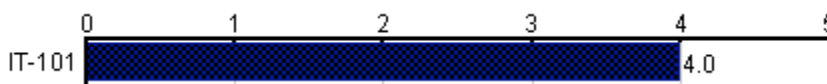
Responses: [SD] strongly disagree=1 [D] disagree=2 [N] neutral=3 [A] agree=4 [SA] strongly agree=5



Survey Results
IT-101

Overall (Global) Questions		IT-101								
		Responses					Course			
		[P]	[F]	[G]	[VG]	[E]	Med.	S.D.	N	Mean
Q17	Overall, I rate this course as	0	0	3	2	0	3	.49	5	3.4
Q18	Overall, I rate this instructor as	0	3	0	2	0	2	.98	5	2.8

Responses: [P] poor=1 [F] fair=2 [G] good=3 [VG] very good=4 [E] excellent=5



Survey Results
IT-101

Overall (Global) Questions		IT-101								
		Responses					Course			
		[L]	[S]	[FA]	[M]	[AG]	Med.	S.D.	N	Mean
Q19	Overall, in this course, I learned	0	0	0	5	0	4	.00	5	4.0

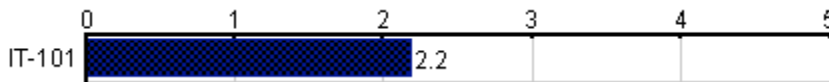
Responses: [L] little=1 [S] some=2 [FA] fair amount=3 [M] much=4 [AG] a great deal=5



Survey Results
IT-101

Open-Ended Questions	IT-101					
	Responses		Course			
	[Y]	[N]	Med.	S.D.	N	Mean
Q20 Is this course required by the college or for your program or major?	4	1	2	.40	5	1.8

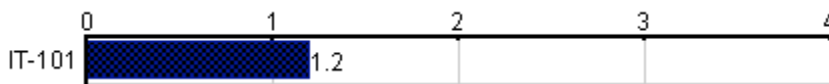
Responses: [Y] yes=2 [N] no=1



Survey Results
IT-101

Open-Ended Questions	IT-101								
	Responses					Course			
	[NR]	[A]	[M]	[M]	[P]	Med.	S.D.	N	Mean
Q21 If yes, it is required for	1	2	2	0	0	2	.75	5	2.2

Responses: [NR] not required=1 [A] AugCore=2 [M] major=3 [M] minor=4 [P] program=5



Survey Results
IT-101

Open-Ended Questions	IT-101							
	Responses				Course			
	[DS]	[WC]	[GP]	[R]	Med.	S.D.	N	Mean
Q22 Please identify your program.	4	1	0	0	1	.40	5	1.2

Responses: [DS] Day School=1 [WC] Weekend College Mpls=2 [GP] Grad Program=3 [R] Rochester=4



Survey Results
IT-101

Open-Ended Questions	IT-101						
	Responses			Course			
	[AF]	[AO]	[AC]	Med.	S.D.	N	Mean
Q23 My course was	3	0	2	1	.98	5	1.8

Responses:

[AF] a face-to-face classroom course=1

[AO] an online course=2

[AC] a combination=3



Survey Results
IT-101

Open-Ended Questions	IT-101											
	Responses								Course			
	[A]	[B]	[C]	[D]	[E]	[F]	[G]	[H]	Med.	S.D.	N	Mean
Q24 What grade do you expect to receive in this course.	2	1	2	0	0	0	0	0	7	.89	5	7.0
Responses: [A] 4 0=8 [B] 3 5=7 [C] 3 0=6 [D] 2 5=5 [E] 2 0=4 [F] 1 5=3 [G] 1 0=2 [H] 0=1												

Question:	Optional comment on Student Learning questions
Response Rate:	60.00% (3 of 5)
1	I found this course too easy.
2	My comments are: Great class, very interesting. Never thought you could actually weave baskets while underwater!
3	I wish we could have done more group activities.

Question:	Optional comment on Teaching Practice questions.
Response Rate:	60.00% (3 of 5)
1	The professor often told stories and didn't stick to the syllabus.
2	Teaching Practice question feedback: Great instructor, very knowledgable. Especially liked the experiential tour of the Grand Canyon. I love whitewater rafting now!
3	The professor was very random.

Question:	Optional comment on Course Element questions
Response Rate:	60.00% (3 of 5)
1	yada yada
2	I never got my papers back.
3	Course Element question Feedback: Feedback could have been provided more promptly. I'm not getting any younger here folks!

Question:	Which aspects of this course were most valuable to your overall learning experience?
Response Rate:	80.00% (4 of 5)
1	The readings.
2	The most valuable experience was learning to ride a unicycle blindfolded. Steep learning curve but a lot of incentive to "get it right."
3	The team assignments.
4	The interaction with other students was helpful.

Question:	Which aspects of this course were least valuable to your overall learning experience?
Response Rate:	80.00% (4 of 5)
1	The lectures.
2	Least valuable? Nothing. I loved this course. So much variety - cooking, basket weaving, unicycle riding - perfect mix of topics!
3	Writing the paper
4	Certain reading assignments were not that great...